



EV CHARGER

Fast, Safe, Affordable & Smart Electric vehicles charging solutions are what people need.
EV Mengchen providing you the all professional solutions of: Ev Chargers, Charging
Stations, EV Assemble Parts etc.

- Chinastandard AC / DC GB/T ✓
- EU standard AC Type2 / DC CCS2 ✓
- America standard AC Type1 / DC CCS1 ✓
- Japan standard AC Type1 / DC CHAdeMO ✓



Electric Vehicle Chargers and Lithium Storage Batteries



Cathy Shilubana
CEO

The Team



Volt-Hi Technology~Company Introduction

Volt-Hi Technology is a forward-thinking company based in South Africa, specializing in electric vehicle (EV) solutions and sustainable energy. We provide a comprehensive range of services focused on electric fleets, covering all car types, electric vehicle chargers, and cutting-edge lithium storage batteries.

In cooperation with our esteemed partner, EV MENGCHEN of China, we are committed to delivering high-quality products that meet global standards. Our wide and skilled team brings technical expertise, ensuring both quality and efficient service, while promoting green energy solutions for a sustainable future. Volt-Hi is actively expanding its influence across borders, building on our foundation of trust and innovation.

Our mission is not only to promote green energy technologies but also to localize production. As part of our growth strategy, we are in the process of establishing a local manufacturing plant to produce EV chargers first-hand, ensuring accessible and high-quality products for the region and beyond.

Volt-Hi Technology is proud to be at the forefront of the energy revolution, empowering businesses and individuals with sustainable, efficient, and reliable solutions.

The background of the entire image is a photograph of a modern industrial facility. It features several large, orange robotic arms (likely KUKA) positioned in a clean, brightly lit environment with white structural beams and overhead lighting. The robots are in various states of motion or ready for work. A central white-bordered box contains text, and a semi-transparent blue rectangle highlights the text area.

Production Strengths:

We Manufacture EV charger at Liushi Town
— City of Electrical Appliances Known as
the production place of 60% low-voltage
products in China.

Mechanized Assembly Line Workshop

Contribute to the world's new energy



Core System

Research and Development System

30+ existing high-tech talents(including Doctor, Master, Professor-level Senior Engineer and Senior Engineer) focus on developing new energy infrastructure Products, and they are committed to providing you with the best new energy solutions



Manufacturing System

Industry-leading manufacturing system and independent production area; adoption of internationally advanced and domestically mature first-class equipment for product quality assurance.



Marketing System

High-quality marketing personnel at home and abroad and global service network for the provision of timely and considerate purchase information and the best purchase configuration combination for you.



Engineering System

Professional system solution suppliers are able to provide you with high-quality projects, such as scheme design, engineering design, process design, system integration, etc.



Customer Service System

Professional after-sales service team and quick response are able to provide you with high-quality tracking and equipment services, user training services and installation.



CERTIFICATE



The Company has obtained several national invention patents to ensure its own technical leadership and uniqueness; simultaneously, EV Mengchen has presided over and participated in multiple national and Zhejiang provincial key scientific research projects and national and industrial standards, and made a break-through to solve many technical problems in network applications such as the ecological construction of new energy automobiles, intelligent charging field, etc.





CONTENTS

Create the best and most innovative products in the world

New Energy Charging Station Series Products

EvCharging Station— MCGJ-Sun	02
EvCharging Station— MCGJ-Momo	03
EvCharging Station— MCGJ-SC	07
EvCharging Station— MCGJ-AES	11
EvCharging Station— MCGJ-SKY	13
EvCharging Station— MCGJ-SP-002	14
EvCharging Station— MCGJ-ALP	15
EvCharging Station— MCGJ-SPE	17
EvCharging Station— MCGJ-SP-001	18
EvCharging Station— MCGJ-DC	19
EvCharging Station— MCGJ-Chenbot	21
Charging Gun	23
Power Balance Control Box	25
EnergyStorage Lithium Battery—ESS	27
EnergyStorage Lithium Battery—L-ESS	29
Energy Storage Lithium Battery-Rack/Cabinet	31
INDUSTRIAL&COMMERCIALENERGY STORAGE	33
Wall-mount Solarinverter	35
Energy Storage Lithium Battery- Rack/Cabinet-Ess	37
Portable outdoor charger- DK600	39

New Energy Charging Station Series

Contribute to the world's new energy!

WENZHOU MENGCHEN
EV Charger Manufacturing Co., Ltd.



Sunshine Series 7/11/22KW AC Wall Mounted Charger



Efficient Charging with Load Balancing



Up to 7/11/22 kw AC



Up to one gun



EV Mengchen App Operation via
4G / Ethernet



RFID Card and Mobile Payments



2-year warranty



Product specification

Data Specifications:	AC Charger (Platinum)	
Model	MCGJ-Sun-001-7KW	MCGJ-Sun-001-11/22kw
Outline dimension(mm)	440*240*110	
Human-machine interaction	4.3-inch display screen	4.3-inch display screen
AC power supply	220Vac±20% ; 50Hz±10% ; L+N+PE	380Vac+20%;50H210% 3L+N+PE
Rated current	32A	32A
Output power	7kW	11kw/22kW
Working environment	Altitude: ≤2000m;Temperature: -20°C~+50°C;	
Charging Mode	Plug & charge, APP, code scanning	APP, code scanning, password charging
Networking Gateway	Ethernet、4G	
Operating mode	offline charging 、 online charging	
Protection function	Overvoltage, undervoltage, overcurrent, shortcircuit, surging, electric leakage,etc.	
Charging interface	Type1/Type2/GB/T	
Charging cable length	Standard configuration 5m (Customization Possible)	
Protection grade	IP 54	
Installation method	Wall-mounted installation or floor-mounted installation,and corresponding accessories shall be equipped	
Package Dimension	512*412*200mm	
Gross Weight	7kg	
Certification	CE	
Communication Protocol	OCPP 1.6	

Momo Series

7/22KW AC Wall Mounted Charger



Efficient Charging with Load Balancing



Up to 7/22 kw AC



Up to one gun



EV Mengchen App Operation via 4G / Ethernet



RFID Card and Mobile Payments



2-year warranty



Product specification

Data Specifications:	AC Charger	
Model	MCGJ-Momo-001	22KW
Outline dimension(mm)	350*240*120	
Human-machine interaction	LED indicator	
AC power supply	220V/380V(Single-phase/three-phase) ac+20%; 50Hz-60Hz;	
Rated current	32A	
Output power	7/22kW	
Working environment	Altitude: ≤2000m;Temperature: -20°C~+50°C;	
Charging method	APP , code scanning	
Networking Gateway	App, 4G	
Operating mode	App, Bluetooth	
Protection function	Overvoltage, undervoltage, overcurrent, shortcircuit, etc	
Charging interface	Type 1/Type2/GB/T	
Charging cable length	Standard configuration 5m (Customization Possible)	
Protection grade	IP 54	
Installation method	Wall-mounted installation, need to be matched with the corresponding accessories	
Package Dimension	500*350*300mm	
Gross Weight	11kg	
Certification	CE	
Communication Protocol	OCPP 1.6	

Momo Series 7kw ^(1Gun)/14KW ^(2 Guns) AC Charging Station



Efficient Charging with Load Balancing



Up to 7/14 kw AC



Up to Two guns



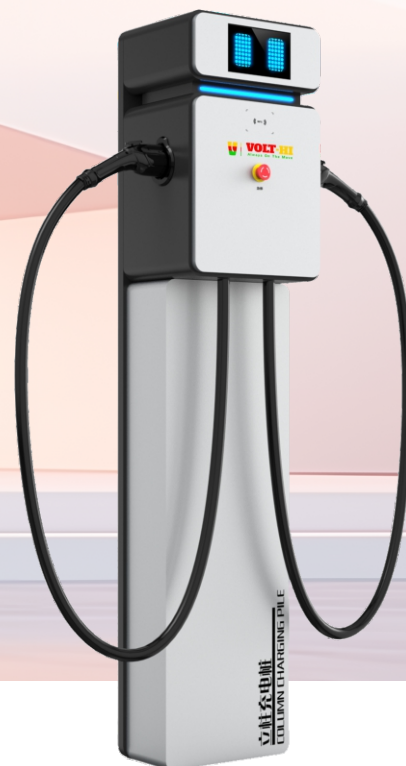
EV Mengchen App Operation via 4G / Ethernet



RFID Card and Mobile Payments



2-year warranty



Product specification

Data Specifications:	AC charging station(sheet metal type)
Model	MCGJ-Momo-002
Outline dimension(mm)	1400*300*200
Human-machine interaction	LED indicator
AC power supply	380V(Single-phase) ac \pm 20%;50Hz~60Hz;3L+N+PE
Rated current	32A+32A(each gun)
Output power	7/2*7KW
Working environment	Altitude: \leq 2000m;Temperature: -20°C~+50°C;
Charging method	APP , code scanning
Networking Gateway	Ethernet, 4G, App
Operating mode	offline charging 、 online charging
Protection function	Overvoltage, undervoltage, overcurrent, shortcircuit, etc
Charging interface	Type 1,Type2,GB/T
Charging cable length	Standard con guration 5m (Customization Possible)
Protection grade	IP 54
Installation method	Floor-mounted installation
Package Dimension	530*330*1400mm
Gross Weight	20kg
Certification	CE
Communication Protocol	OCPP 1.6

Momo Series DC120KW 2Guns DC Charging Station



Efficient Charging with Load Balancing



Up to 120 kw DC



Up to two guns



EV Mengchen App Operation via WiFi / 4G / Ethernet



RFID Card and Mobile Payments



2-year warranty



Product specification

Data Specifications:	Integrated DC Charging Station(Sheet Metal Type)
Model	MCGJ-Momo-003
Outline dimension(mm)	1900*700*600 (mm)
Human-machine interaction	7~10 inch touch screen
Input vlotage	380V(three phase) ac±20%; 50Hz~60Hz; 3L+N+PE
Output voltage	200-1000V
Output power	DC250A
Output current	DC120KW
Working environment	Altitude: ≤2000m; Temperature: -20°C~+50°C;
Charging method	VIN code, password, POS, code scanning
Networking method	Ethernet, 4G, Wifi,App
Operating method	offline charging 、 online charging
Protection function	Overvoltage, undervoltage, overcurrent, shortcircuit, surging, electric leakage, etc
Charging interface	CCS2/GB/T/CHAdeMO
Charging cable length	Standard configuration 5m(optional)
Protection grade	IP 54
Package Dimension	1900*850*750mm
Gross Weight	300kg
Certification	CE
Communication Protocol	OCPP 1.6

Momo Series DC 120/160/180/240 KW 4Guns DC Charging Station



Efficient Charging with Load Balancing



Up to 120/160/180/240 kw



Up to four guns



EV Mengchen App Operation via WiFi / 4G / Ethernet



RFID Card and Mobile Payments



2-year warranty



Product specification

Data Specifications:	Integrated DC Charging Station(Sheet Metal Type)
Model	MCGJ-Momo-004
Outline dimension(mm)	1900*700*600 (mm)
Human-machine interaction	7~10 inch touch screen
Input vlotage	380V(three phase) ac±20%; 50Hz~60Hz; 3L+N+PE
Output voltage	200-1000V
Output power	DC 0~250A
Output current	120/160/180/240 KW
Working environment	Altitude: ≤2000m; Temperature: -20℃~+50℃;
Charging method	VIN code, password, POS, code scanning
Networking method	Ethernet, 4G, Wifi,App
Operating method	offline charging 、 online charging
Protection function	Overvoltage, undervoltage, overcurrent, shortcircuit, surging, electric leakage, etc
Charging interface	CCS2/GB/T/CHAdemo
Charging cable length	Standard configuration 5m(optional)
Protection grade	IP 54
Package Dimension	1900*850*750mm
Gross Weight	300kg
Certification	CE
Communication Protocol	OCPP 1.6

Momo Series 22kw (2 Guns)/44KW (2 Guns) AC Charging station



Efficient Charging with Load Balancing



Up to 22/44 kw AC



Up to two guns



EV Mengchen App Operation via 4G / Ethernet



RFID Card and Mobile Payments



2-year warranty



Product specification

Data Specifications:	AC charging station(sheet metal type)
Model	MCGJ-Momo-005
Outline dimension(mm)	1400*300*200
Human-machine interaction	4.3 inch touch screen
AC power supply	380V(Single-phase) ac \pm 20%;50Hz~60Hz;3L+N+PE
Rated current	32A+32A(each gun)
Output power	2*11/2*22KW
Working environment	Altitude: \leq 2000m;Temperature: -20°C~+50°C;
Charging method	APP , code scanning
Networking Gateway	Ethernet, 4G, WiFi, App
Operating mode	offline charging 、 online charging
Protection function	Overvoltage, undervoltage, overcurrent, shortcircuit, etc
Charging interface	Type 1,Type2,GB/T
Charging cable length	Standard con guration 5m (Customization Possible)
Protection grade	IP 54
Installation method	Floor-mounted installation
Package Dimension	530*330*1400mm
Gross Weight	43kg
Certification	CE
Communication Protocol	OCPP 1.6

Star Charge Series

7KW/22KW Wall Mounted AC Charger



Efficient Charging with Load Balancing



Up to 7 kw or 22 kw AC



Up to one gun



EV Mengchen App Operation via 4G / Ethernet



RFID Card and Mobile Payments



2-year warranty



Product specification

Data Specifications:	AC charging station	
Model	MCGJ-SC-001-7kw	MCGJ-SC-001-22kw
Outline dimension(mm)	340*240*110	480*350*120
Human-machine interaction	4.3-inch display screen	4.3-inch display screen
AC power supply	220Vac±20% ; 50Hz±10% ; L+N+PE	380Vac+20%;50H210%; 3L+N+PE
Rated current	32A	32A
Output power	7kw	22kw
Working environment	Altitude: ≤2000m;Temperature: -20℃~+50℃;	
Charging method	Plug & charge, APP, code scanning	APP , code scanning, password charging
Networking method	Ethernet、 4G	
Operating mode	online charging、 offline charging	
Charging mode	Plug & charge	
Charging interface	Type1/Type2/GB/T	
charging cable length	Standard configuration 5m (Customization possible)	
Protection grade	IP 54	
Package dimension	400*350*200mm	
Gross weight	7kg	
Protection function	Overvoltage, undervoltage, overcurrent, shortcircuit, surging, electric leakage,etc.	
Certification	CE	
Communication protocol	OCPP 1.6	
installation method	Wall-mounted installation or floor-mounted installation, and corresponding accessories shall be equipped	

Star Charge Series

22KW/44KW AC Charger



Efficient Charging with Load Balancing



Up to 22 kw or 44 kw AC



Up to two guns



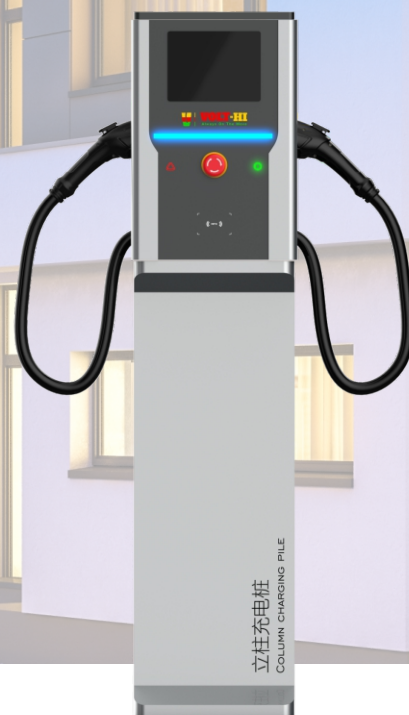
EV Mengchen App Operation via 4G / Ethernet



RFID Card and Mobile Payments



2-year warranty



Product specification

Data Specifications:	AC charging station	
Model	MCGJ-SC-002-22kw	MCGJ-SC-002-44kw
Outline dimension(mm)	500*300*130	
Human-machine interaction	4.3-inch display screen	
AC power supply	380V(three phase-phase) ac \pm 20% ; 50Hz~60Hz ; 3L+N+PE	
Rated current	32A+32A(each gun)	
Output power	2*11kw	2*22kw
Working environment	Altitude: \leq 2000m;Temperature: -20°C~+50°C;	
Charging method	Plug & charge, APP, code scanning	
Networking method	Ethernet, 4G	
Operating mode	offline charging 、 online charging	
Charging mode	Plug & charge	
Charging interface	Type1/Type2/GB/T	
charging cable length	Standard configuration 5m (Customization possible)	
Protection grade	IP 54	
Package dimension	720*470*200mm	
Gross weight	17.5kg	
Protection function	Overvoltage, undervoltage, overcurrent, shortcircuit,,etc.	
Certification	CE	
Communication protocol	OCPP 1.6	
installation method	Wall-mounted installation or floor-mounted installation, and corresponding accessories shall be equipped	

Star Charge Series 60/80/120KW DC Charging Station



Efficient Charging with Load Balancing



Up to 60/80/120 kw DC



Up to two guns



EV Mengchen App Operation via WiFi / 4G / Ethernet



RFID Card and Mobile Payments



2-year warranty



Product specification

Data Specifications:	Integrated DC Charging Station(Sheet Metal Type)
Model	MCGJ-SC-003-60/80/120KW
Outline dimension(mm)	1620*600*500 (mm)
Human-machine interaction	7~10 inch touch screen
Input voltage	380V(three phase) ac \pm 20%; 50Hz~60Hz; 3L+N+PE
Output voltage	200-1000V
Output power	60/80/120 KW
Output current	80A~250A
Working environment	Altitude: \leq 2000m; Temperature: -20°C~+50°C;
Charging method	VIN code, password, POS, code scanning
Networking Gateway	Ethernet, 4G, Wifi
Operating method	offline charging 、 online charging
Protection function	Overvoltage, undervoltage, overcurrent, shortcircuit, surging, electric leakage, etc
Charging interface	CCS2/GBT
Charging cable length	Standard configuration 5m (Customization Possible)
Protection grade	IP54
Package Dimension	1900*800*650mm
Gross Weight	120KW=300kg
Certification	CE
Communication Protocol	OCPP 1.6

Atlas Energy Series

22KW AC Wall Mounted Charger



Efficient Charging with Load Balancing



Up to 22 kw AC



Up to two guns



EV Mengchen App Operation via 4G / Ethernet



RFID Card and Mobile Payments



2-year warranty



Product specification

Data Specifications:	AC Charger	
Model	MCGJ-AES-001	22KW
Outline dimension(mm)	350*240*120	
Human-machine interaction	LED indicator	
AC power supply	220V/380V(Single-phase/three-phase) ac+20%; 50Hz-60Hz;	
Rated current	32A+32A (each gun)	
Output power	22kW	
Working environment	Altitude: ≤2000m;Temperature: -20°C~+50°C;	
Charging method	Plug & charge	
Networking Gateway	App, 4G	
Operating mode	App	
Protection function	Overvoltage, undervoltage, overcurrent, shortcircuit, etc	
Charging interface	Type 1/Type2/GB/T	
Charging cable length	Standard configuration 5m (Customization Possible)	
Protection grade	IP 54	
Installation method	Wall-mounted installation, need to be matched with the corresponding accessories	
Package Dimension	500*350*300mm	
Gross Weight	11kg	
Certification	CE	
Communication Protocol	OCPP 1.6	

Atlas Energy Series

11KW/22KW AC Wall Mounted Charger



Efficient Charging with Load Balancing



Up to 11/22 kw AC



Up to one guns



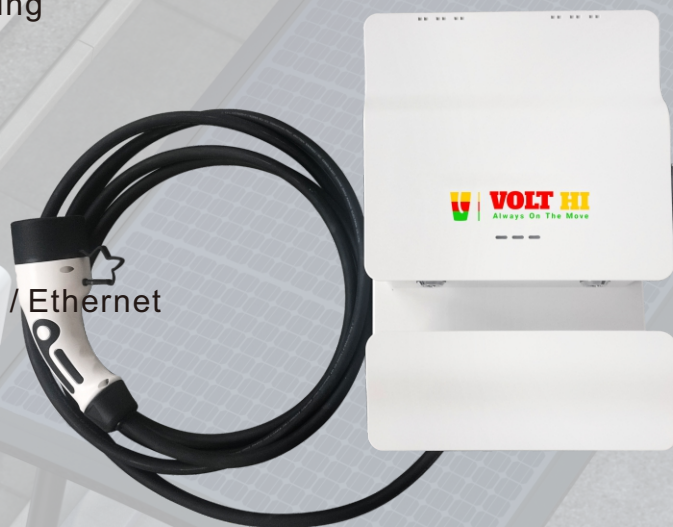
EV Mengchen App Operation via 4G / Ethernet



RFID Card and Mobile Payments



2-year warranty



Product specification

Data Specifications:	AC Charger	
Model	MCGJ-AES-002	11KW/22KW
Outline dimension(mm)	400*280*150	
Human-machine interaction	LED indicator	
AC power supply	220V/380V(Single-phase/three-phase) ac+20%;50Hz-60Hz;	
Rated current	32A	
Output power	11kw	22kw
Working environment	Altitude: ≤2000m;Temperature: -20°C~+50°C;	
Charging method	Plug & charge	
Networking Gateway	App, 4G	
Operating mode	App	
Protection function	Overvoltage, undervoltage, overcurrent, shortcircuit, etc	
Charging interface	Type 1/Type2/GB/T	
Charging cable length	Standard configuration 5m (Customization Possible)	
Protection grade	IP 54	
Installation method	Wall-mounted installation, need to be matched with the corresponding accessories	
Package Dimension	450*350*250mm	
Gross Weight	7.6kg	
Certification	CE	
Communication Protocol	OCPP 1.6	

Sky Series 22kw (2 Guns)/44KW (2 Guns) AC Charging station



Efficient Charging with Load Balancing



Up to 22/44 kw AC



Up to two guns



EV Mengchen App Operation via 4G / Ethernet



RFID Card and Mobile Payments



2-year warranty



Product specification

Data Specifications:	AC charging station(sheet metal type)
Model	MCGJ-Sky-001
Outline dimension(mm)	1400*300*200
Human-machine interaction	4.3 inch touch screen
AC power supply	380V(Single-phase) ac \pm 20%;50Hz~60Hz;3L+N+PE
Rated current	32A+32A(each gun)
Output power	2*11/2*22KW
Working environment	Altitude: \leq 2000m;Temperature: -20°C~+50°C;
Charging method	APP , code scanning
Networking Gateway	Ethernet, 4G, WiFi, App
Operating mode	offline charging 、 online charging
Protection function	Overvoltage, undervoltage, overcurrent, shortcircuit, etc
Charging interface	Type 1,Type2,GB/T
Charging cable length	Standard con guration 5m (Customization Possible)
Protection grade	IP 54
Installation method	Floor-mounted installation
Package Dimension	530*330*1400mm
Gross Weight	43kg
Certification	CE
Communication Protocol	OCPP 1.6

Spark Series 60/80/120/180/240KW DC Charging Station



Efficient Charging with Load Balancing



Up to 60/80/120/180/240 kw DC



Up to two guns



EV Mengchen App Operation via WiFi / 4G / Ethernet



RFID Card and Mobile Payments



2-year warranty



Product specification

Data Specifications:	Integrated DC Charging Station(Sheet Metal Type)
Model	MCGJ-SP-002
Outline dimension(mm)	1620*600*500 (mm)
Human-machine interaction	7~10 inch touch screen
Input vlotage	380V(three phase) ac±20%; 50Hz~60Hz; 3L+N+PE
Output voltage	200-1000V
Output power	60/80/120/180/240KW
Output current	80A~250A
Working environment	Altitude: ≤2000m; Temperature: -20℃~+50℃;
Charging method	VIN code, password, POS, code scanning
Networking method	Ethernet, 4G, Wifi,App
Operating method	offline charging 、 online charging
Protection function	Overvoltage, undervoltage, overcurrent, shortcircuit, surging, electric leakage, etc
Charging interface	CCS2/GB/T
Charging cable length	Standard configuration 5m(optional)
Protection grade	IP54
Package Dimension	1900*800*650mm
Certification	CE
Communication Protocol	OCPP 1.6
Gross Weight	120KW=300kg

Alpha Series 60/80/120KW DC Charging Station 2 Guns



Efficient Charging with Load Balancing



Up to 60/80/120 kw DC



Up to two guns



EV Mengchen App Operation via WiFi / 4G / Ethernet



RFID Card and Mobile Payments



2-year warranty



Product specification

Data Specifications:	Portable DC Charging Station(Sheet Metal Type)
Model	MCGJ-ALP-001
Outline dimension(mm)	1620*600*500 (mm)
Human-machine interaction	7~10 inch touch screen
Input voltage	380V(three phase) ac±20%; 50Hz~60Hz; 3L+N+PE
Output voltage	200-1000V
Output power	80A~250A
Output current	60/80/120KW
Working environment	Altitude: ≤2000m; Temperature: -20°C~+50°C;
Charging method	VIN code, password, POS, code scanning
Networking method	Ethernet, 4G, Wifi, App
Operating method	offline charging 、 online charging
Protection function	Overvoltage, undervoltage, overcurrent, shortcircuit, surging, electric leakage, etc.
Charging interface	CCS2,GB/T
Charging cable length	Standard configuration 5mm(Customization possible)
Protection grade	IP54
Package Dimension	1900*850*750mm
Gross Weight	120KW=300kg
Certification	CE
Communication Protocol	OCPP 1.6

Alpha Series DC120KW 3Guns (2 DC Guns)+(1 Gun)AC 22kw DC Charging Station



Efficient Charging with Load Balancing



Up to 120 kw DC & 22 kw AC



Up to three guns



EV Mengchen App Operation via WiFi / 4G / Ethernet



RFID Card and Mobile Payments



2-year warranty



Product specification

Data Specifications:	Integrated DC Charging Station(Sheet Metal Type)
Model	MCGJ-ALP-002
Outline dimension(mm)	1900*700*600 (mm)
Human-machine interaction	7~10 inch touch screen
Input vlotage	380V(three phase) ac±20%; 50Hz~60Hz; 3L+N+PE
Output voltage	200-1000V
Output power	DC250A+AC32A
Output current	DC120KW+AC22KW
Working environment	Altitude: ≤2000m; Temperature: -20℃~+50℃;
Charging method	VIN code, password, POS, code scanning
Networking method	Ethernet, 4G, Wifi,App
Operating method	offline charging 、 online charging
Protection function	Overvoltage, undervoltage, overcurrent, shortcircuit, surging, electric leakage, etc
Charging interface	CCS2/GB/T/CHAdeMO
Charging cable length	Standard configuration 5m(optional)
Protection grade	IP 54
Package Dimension	1900*850*750mm
Gross Weight	300kg
Certification	CE
Communication Protocol	OCPP 1.6

Spectrum Series 20KW/30KW Portable DC Charger



Efficient Charging with Load Balancing



Up to 20/30 kw DC



Up to one gun



Plug & Charge



2-year warranty



Product specification

Data Specifications:	AC Charger	
Model	MCGJ-SPE-001-20KW	MCGJ-SPE-001-30KW
Outline dimension(mm)	345*175*265	540*375*195
User interface	Digital, LED	
Output voltage	200V-450V	200V-750V
Power factor	≥0.99 (above 50% load)	
Human-machine interface	LED indicator	
Working environment	Altitude: ≤3000m; Temperature: -20°C~+50°C;	
Charging method	Plug & Charge	
Networking method	None	
Input frequency	45~65Hz	
Protection function	Overvoltage, undervoltage, overcurrent, shortcircuit, surging, electric leakage, etc.	
Charging interface	CCS2, GB/T	
charging cable length	Standard configuration 5m(optional)	
Protection grade	IP 54	
Package Dimension	750*400*530mm	
Gross Weight	37kg	
Certification	CE	
Communication Protocol	OCCP 1.6	

Spark Series 20KW/30KW DC Charging Station



Efficient Charging with Load Balancing



Up to 20/30 kw DC



Up to one gun



EV Mengchen App Operation via 4G / Ethernet



RFID Card and Mobile Payments



2-year warranty



Product specification

Data Specifications:	AC Charger	
Charging gun	One Gun	
Display mode	LED indicator/display screen	
Dimension(height*width*depth)(mm)	410*200*620	
Charging method	Mobile code scanning, VIN code,App	
Charging mode	Fixed-time mode, fixed-electricity mode, fixed-amount mode, automatic charging mode, fixed-power mode reservation mode	
Output voltage range(VDC)	DC200-1000V	
Single plug rated output current(ADC)	37A	30A
Single plug maximum output current(ADC)	50A	120A
Soft-start time(S)	3 ~ 8	
Constant current output range	0% ~ 100%	
Stabilized current precision	$\leq \pm 1\%$	
Ripple coefficient	$\leq 1\%$ (peak-to-peak value)	
Stabilized voltage precision	$\leq \pm 0.5\%$	
Charging Interface	CCS2, GB/T	
Charging cable length	Standard configuration 5m (customization possible)	
Package Dimension	700*440*800mm	
Gross Weight	49kg	
Certification	CE	
Communication Protocol	OCPP 1.6	

Super Fast DC Series

240/360/480/720KW



Efficient Charging with Load Balancing



240/360/480/720 KW



Up to two guns



EV Mengchen App Operation via 4G / Ethernet



RFID Card and Mobile Payments



2-year warranty



Super Fast DC Series

240/360/480/720KW

Product specification

Data Specifications:	Integrated DC Charging Station(Sheet Metal Type)	
Model	Super Fast DC Series 240/360/480/720KW	
	Rectifier cabinet	Liquid cooling split charger
Rated power	240/360/480/720KW	
Installation method	Stand	
wiring method	Enter and leave at the bottom	
Equipment size	1000*1300*2120mm	1630*500*370mm
Input voltage	380VAC±20% 200-1000VDC	
Input frequency	45-65Hz	
Output voltage	200-1000VDC	
Constant power	300-1000VDC	
Maximum output current	0-240A 0-600A	
Cable length	5m(change according to the customer requirements)	
Measuring accuracy	1.0	
Human-machine interface	LED indicator 7-inch highlighted color touch screen	
Charging mode	Automatic fully charging / fixed electric quantity /fixed amount / fixed time	
Charging method	Swipe the card / scan the code / password	
mode of payment	Swipe the card / scan the code	
Network way	Ethernet / 4G	
Norm		
Safety function	Charging gun temperature detection, over voltage protection, under voltage protection, overload protection, short circuit protection, ground protection, over temperature protection, low temperature protection, insulation monitoring protection, polarity reverse connection protection, lightning protection, scam protection, leakage protection	
working temperature	-20°C ~ +50°C	
Working humidity	5%~95% No frost	
Work altitude	< 2000m	
Protection level	IP54	
Cooling method	Forced air cooling	liquid cooling
Noise control	≤65db ≤50db	
MTBF	1752 hours	

DC 60KW/120KW-62KWH/141KWH Battery 3 Guns



Efficient Charging with Load Balancing



Up to 60/120 KW DC



Up to three guns



Plug & Charge



2-year warranty



Product specification

Data Specifications:	Integrated DC Charging Station(Sheet Metal Type)
Model	MCGJ-Chenbot-001
Outline dimension(mm)	1233.5*925*1050 mm
Human-machine interaction	7~10 inch touch screen
Input vlotage	380V(three phase) ac±20%; 50Hz~60Hz; 3L+N+PE
Output voltage	200v-750VDC
Output power	0~250A
Output current	60/120 KW
Working environment	Altitude: ≤2000m; Temperature: -20℃~+50℃;
Charging method	plug and charge
Operating method	offline charge
Protection function	Overvoltage, undervoltage, overcurrent, shortcircuit, surging, electric leakage, etc
Charging interface	CCS2/GB/T
Charging cable length	Standard configuration 5m(optional)
Package Dimension	1900*850*750mm
Gross Weight	600kg
Certification	CE
energy storage battery capacity	62KWH/141KWH
Maximum Current (Continous Charging)	51A
Maximum Current (Continous Discharge)	102A

DC 60KW/120KW-62KWH/141KWH Battery 1 Gun



Efficient Charging with Load Balancing



Up to 60/120 KW DC



Up to one gun



Plug & Charge



2-year warranty



Product specification

Data Specifications:	Integrated DC Charging Station(Sheet Metal Type)
Model	MCGJ-Chenbot-002
Outline dimension(mm)	1233.5*925*1050 mm
Human-machine interaction	7~10 inch touch screen
Input vlotage	380V(three phase) ac±20%; 50Hz~60Hz; 3L+N+PE
Output voltage	200v-750VDC
Output power	0~250A
Output current	60/120 KW
Working environment	Altitude: ≤2000m; Temperature: -20℃~+50℃;
Charging method	plug and charge
Operating method	offline charge
Protection function	Overvoltage, undervoltage, overcurrent, shortcircuit, surging, electric leakage, etc
Charging interface	CCS2/GB/T
Charging cable length	Standard configuration 5m(optional)
Package Dimension	1900*850*750mm
Gross Weight	600kg
Certification	CE
energy storage battery capacity	62KWH/141KWH
Maximum Current (Continous Charging)	51A
Maximum Current (Continous Discharge)	102A

DC Charging Gun

- Enclosure material: thermoplastic, with the flame retardant grade of UL94V-0, terminal: copper alloy, silver plated



Product specification

Data Specification	DC Charging Gun
Rated working current	40A/63A/80A/125A/200A/250A
Working voltage	400/750VDC
Contact resistance	0.5mΩ Max
Insulation resistance	>2000MΩ
Terminal temperature rise	<50k
Pressure resistance	3200V
Mechanical life	Non-load Plug>10000 times
Insertion and extraction force during coupling	70N<F<140N
Working environment temperature	-30°C~+50°C
Sealing part	Rubber or silica gel
Pin	Copper alloy, silver plated +top thermoplastic
Enclosure material	Thermoplastics
Flame retardant grade	UI94 V-0
Charging interface	CCS2/GB/T/CHAdeMO

AC Charging Gun

- Enclosure material: thermoplastic, with the flame retardant grade of UL94V-0, terminal: copper alloy, silver plated



Product specification

Data Specification	AC Charging Gun
Rated current	16/32A
Rated voltage	220V-380V
Number of power pins	5(PE,L1,L2,L3,N)
Number of signal electric shock	2(CC,CP)
Temperature rise of signal contact	<50K
Insertion and extraction force during coupling	≤80N
Plugging cycle	>10000 times
Working environment temperature	-30°C-50°C
Impact resistance	Capable of withstanding 1m height drop and 2t vehicle rolling
Insulation resistance	> 1000MΩ
Protection grade	IP67(Plug-in, protective cover)
Pin	Copper alloy, silver plated + top insulation
Enclosure material	Thermoplastic material, flame retardant grade: UL94 V-0
Enclosure color	White
Charging interface	Type1/Type2/GB/T



Power Balance Control Box

- Input voltage--380V+10%;
- Maximum input current--200A;
- Current type--three phase AC;
- Rated frequency--50Hz;
- Grounding system type-TN-S、TN-CS;
- Operation condition comply with GOST 15150-69-U2;
- Protection level--IP42;
- Insulation resistance--more than 1M0hm;
- Two sets of power outputs are used to connect the AP controlled by the built-in server;
- The maximum current of one power output connected to AP is 40A;
- Connect the input to the fire alarm receiving and control unit;
- Charging station control port interface - Ethernet;
- Number of control ports of the charging station----10;
- Built-in meter;
- Port interface for connecting to an external meter ----RS485 Modbus;
- Power output overcurrent protection;
- Emergency stop button
- dimension VShG mm:1030x680x217

Power Balance Control Box

A set of 10 Pandora Wall-E charging stations (AC 22 kW) with balance control and switch panel.

10-port distribution control cabinet

10 Pandora Wall-E home stations (without cable)

Designed for installation of cascading charging stations in parking lots of apartment buildings, office buildings or shopping and entertainment centers, the product features power limits and intelligent distribution of available power between charging stations.

The suite allows you to equip 10 parking Spaces with universal AC charging stations - for charging any electric vehicle or PHEV hybrid. And it can be installed either in off-the-shelf facilities using available power sources or in designed buildings/parking lots to provide additional power.

The suite solves the problem of power overload due to uneven load by adjusting the power of each charging station individually. Each Wall-E station is connected not only to the balance control panel by power cable, but also to the switch by PCP/IP information cable with RJ45 connector, and then to the microcomputer for easy maintenance and diagnosis, with a touch screen for control and monitoring directly inside the panel.

In addition, a remote monitoring mode is available, where the dispatcher can control the parameters of each charging station in real time on the computer screen, and turn the charging station on and off when necessary.

The electrical installation equipment of the switchboard protects each station along the 380V line from overload and is also capable of remote emergency (service) shutdowns on operator orders or signals from automatic fire danger alarms or fire suppression systems.

The package includes:

Ten pieces. AC 22KW Power Station Pandora Wall-E(Home version)
One set. Balance control and distribution panel for 10 connections, 40A each
Document of a typical connection diagram



Energy Storage Power Supply

Convenient energy storage for
your home, ensure your
comfortable life

Solar Energy Store

Contribute to the world's new energy!



ESS

Stack Lithium Battery Energy Storage System



Li-FePO₄



3-8KW
Out put



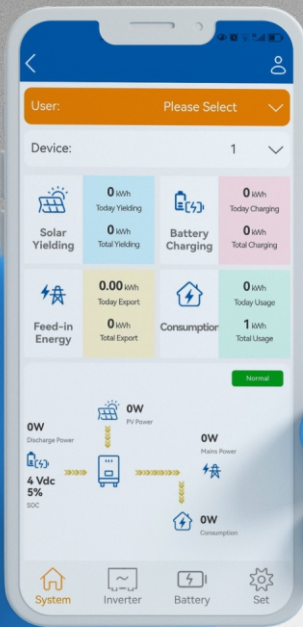
APP
Control

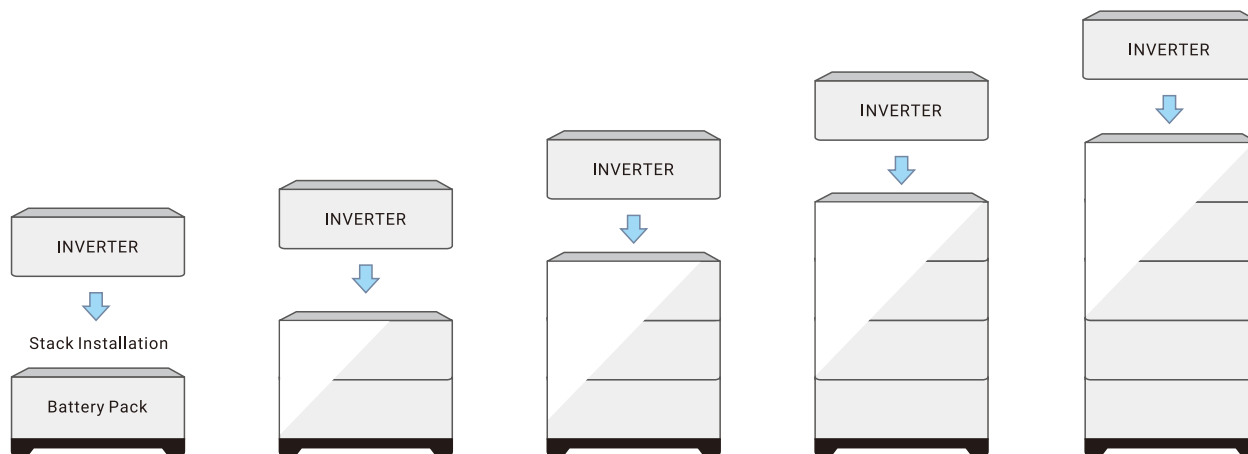


Customized
High/low voltage



Customized
capacity





Model	S-ESS-5	S-ESS-10	S-ESS-15	S-ESS-20
Capacity	5.12KWh/5KW	10.24KWh/5KW	15.36KWh/5KW	20.48KWh/5KW
Standard discharge current	50A	50A	50A	50A
Max. discharge current	100A	100A	100A	100A
Working voltage range	43.2-57.6VDC	43.2-57.6VDC	43.2-57.6VDC	43.2-57.6VDC
Standard Voltage	51.2VDC	51.2VDC	51.2VDC	51.2VDC
Max. charging current	50A	50A	50A	50A
Max. charging voltage	57.6V	57.6V	57.6V	57.6V
Rated PV input voltage	360VDC			
MPPT tracking voltage range	120V-450V			
Max input voltage (VOC) at lowest temperature	500V			
Max input power	6000W			
Number of MPPT tracking paths	1Path			
DC input voltage range	42-60VDC			
Rated mains power input voltage	220VAC/230VAC/240VAC			
Grid power input voltage range	170VAC~280VAC (UPS mode) / 120VAC~280VAC (Inverter mode)			
Grid input frequency range	45Hz~55Hz (50Hz); 55Hz~65Hz (60Hz)			
Inverter output efficiency	94%(MAX)			
Inverter output voltage	220VAC±2%/230VAC±2%/240VAC±2%(Inverter mode)			
Inverter output frequency	50Hz±0.5 or 60Hz±0.5(Inverter mode)			
Inverter output waveform	Pure sine wave			
Grid output efficiency	>99%			
Max mains charging current	60A			
Max PV charging current	100A			
Max charging current (Grid+PV)	100A			
Optional mode	Grid priority/PV priority/Battery priority			
Warranty	5~10Years			
Communication	Optional: RS485/RS232/CAN WiFi/4G/Bluetooth			

*Voltage, capacity, size/color customization, OEM/ODM services can be provided accordi

L-ESS

Vertical Lithium Battery Energy Storage System



Li-FePO₄



3-8KW
Out put



APP
Control



Customized
High/low voltage



Customized
capacity



Home ESS

The ESS series product (Energy Storage System) is a high-performance off-grid energy storage system independently developed by us. It uses high-quality lithium iron phosphate batteries and is equipped with an intelligent BMS battery management system. It has long cycle life, high safety performance, and good sealing; High-frequency off-grid photovoltaic inverter, built-in MPPT controller, can provide efficient and reliable energy solutions for photovoltaic off-grid power generation systems, energy storage systems, household photovoltaic storage systems, and industrial and commercial energy storage systems.

The system is equipped with a self-developed APP, supports IOS/Android mobile phones, remotely controls the charging and discharging of the battery pack, monitors the system operating data in real time, and quickly enters the troubleshooting work when the system fails, so as to restore the effective power supply more efficiently.

Model	L-ESS-10	L-ESS-15	L-ESS-20
Capacity	10.24KWh/5KW	15.36KWh/5KW	20.48KWh/5KW
Standard discharge current	50A	50A	50A
Max. discharge current	100A	100A	100A
Working voltage range	43.2-57.6VDC	43.2-57.6VDC	43.2-57.6VDC
Standard Voltage	51.2VDC	51.2VDC	51.2VDC
Max. charging current	50A	50A	50A
Max. charging voltage	57.6V	57.6V	57.6V
Rated PV input voltage	360VDC		
MPPT tracking voltage range	120V-450V		
Max input voltage (VOC) at lowest temperature	500V		
Max input power	6000W		
Number of MPPT tracking paths	1Path		
DC input voltage range	42-60VDC		
Rated mains power input voltage	220VAC/230VAC/240VAC		
Grid power input voltage range	170VAC~280VAC (UPS mode) / 120VAC~280VAC (Inverter mode)		
Grid input frequency range	45Hz~55Hz (50Hz); 55Hz~65Hz (60Hz)		
Inverter output efficiency	94%(MAX)		
Inverter output voltage	220VAC±2%/230VAC±2%/240VAC±2%(Inverter mode)		
Inverter output frequency	50Hz±0.5 or 60Hz±0.5(Inverter mode)		
Inverter output waveform	Pure sine wave		
Grid output efficiency	>99%		
Max mains charging current	60A		
Max PV charging current	100A		
Max charging current (Grid+PV)	100A		
Optional mode	Grid priority/PV priority/Battery priority		
Warranty	5~10Years		
Communication	Optional: RS485/RS232/CAN WiFi/4G/Bluetooth		

*Voltage, capacity, size/color customization, OEM/ODM services can be provided according to customer needs

Rack/Cabinet Energy Storage Lithium Battery



STANDARD



FREE



PARALLEL



COMMUNICATION



OEM/ODM



Cabinet series adopts high-quality lithium iron phosphate batteries, equipped with intelligent BMS battery management system, long cycle life, high safety performance, beautiful appearance, free combination and convenient installation. LCD display, visualization of battery operating data. Compatible with most solar inverters, providing efficient energy for photovoltaic off-grid households, commercial and other electrical equipment.

Model	4850		48100		48200	
Specification	48V50Ah	51. 2V50Ah	48V100Ah	51. 2V100Ah	48V200Ah	51. 2V200Ah
Combination	15S1P	16S1P	15S1P	16S1P	15S1P	16S1P
Capacity	2.4KWh	2.56KWh	4.8KWh	5.12KWh	9.6KWh	10.24KWh
Standard discharge current	50A	50A	50A	50A	50A	50A
Max. discharge current	100A	100A	100A	100A	100A	100A
Working voltage range	40.5-54VDC	43.2-57.6VDC	40. 5-54VDC	43.2-57.6VDC	40. 5-54VDC	43.2-57.6VDC
Standard Voltage	48VDC	51.2VDC	48VDC	51.2VDC	48VDC	51.2VDC
Max. charging current	50A	50A	50A	50A	100A	100A
Max. charging voltage	54V	57.6V	54V	57.6V	54V	57.6V
Cycle	3000~6000cycles @DOD 80%/25°C/0.5C					
Working humidity	65±20%RH					
Operating temperature	-10~+50°C					
Working altitude	≤2500m					
Cooling method	Natural cooling					
Installation	Cabinet/Rack Mount					
Protection level	IP20					
Max of parallel	15PCS					
Warranty	5~10 Years					
Communication	Default: RS485/RS232/CAN Optional: WiFi/4G/Bluetooth					
Certified	CE ROHS FCC UN38.3 MSDS					
Product Size	440*495*88mm		440*495*178mm		440*590*178mm	
Package Size	555*500*130mm		555*500*235mm		480*650*220mm	
Net weight	25kg	37kg	41kg	45kg	101kg	105kg
Gross weight	30kg	42kg	49kg	55kg	111kg	115kg

*Voltage, capacity, size/color customization, OEM/ODM services can be provided according to customer needs



LOW VOLTAGE
PROTECTION



OVER VOLTAGE
PROTECTION



OVER CURRENT
PROTECTION



OVER TEMPERATURE
PROTECTION



BALANCED
PROTECTION



OVER DISCHARGE
PROTECTION



SHORT CIRCUIT
PROTECTION

INDUSTRIAL & COMMERCIAL ENERGY STORAGE



Power grid



UPS



Intelligent control



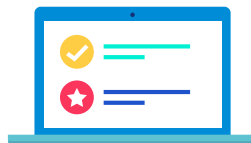
Energy saving



Green power

AC Line —
DC Line —
COM Line —

EMS



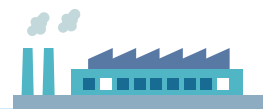
Grid



Transformer



PV



Industrial & commercial load



PCS



Battery pack



Battery pack



Technical Parameters

Cell parameters			
Cell type	Lithium iron phosphate(LFP) 280Ah		
Rated voltage	3.2V		
Depth of discharge	Deep discharge 90%		
Installed capacity			
Rated power	215KWh	604.8KWh	1MWh
Battery rated voltage	768V	720V	720V
Battery voltage range	600V-876V	560V-820V	560V-820V
DC discharge current	140A	140A	140A
Single Cluster Battery Pack	16S1P	15S1P	15S1P
Number of battery	15PCS (15S)	45PCS (15S3P)	75PCS (15S5P)
AC Side			
Rated power	100KW	300KW	500KW
Rated grid voltage	400V		
Rated AC current	140A		
Allowable voltage range	360V~440V		
Rated grid frequency	50Hz/60Hz		
Power Factor	>0.99		
AC access method	3W+N+PE		
System parameters			
System efficiency	>86%		
Cycle life	>6000(25℃ 0.5C >90%DOD 70%EOL)		
Cooling method	Air Cooling		
Allowable ambient temp.	-30~50℃		
Maximum working altitude	4000m(>2000mDerating is required)		
Fire mode	Heptafluoropropane gas fire extinguishing device		
Degree of protection	IP54		
Communication method	RS485/CAN		
Operating mode	Microgrid, UPS, Backup power		



Lithium battery
Communication

Wall-mount Solar Inverter



Pure Sine Wave



MPPT



RS485/232
CAN



Wall-mounted

PARAMETER		
Model	PW3200	PW5000
Rated power	3200W	5000W
Standard voltage	24VDC	48VDC
Installation	Wall mount installation	
PV PARAMETER		
Working model	MPPT	
Rated PV input voltage	360VDC	
MPPT tracking voltage range	120-450V	
Max input voltage (VOC) at lowest temperature	500V	
Max input power	4000W	6000W
Number of MPPT tracking paths	1 Path	
INPUT		
DC input voltage range	21-30VDC	42-60VDC
Rated mains power input voltage	220/230/240VAC	
Grid power input voltage range	170~280VAC(UPS model)/120~280VAC(inverter model)	
Grid input frequency range	40~55Hz(50Hz) 55~65Hz(60Hz)	
OUTPUT		
Inverter	Output efficiency	94%
	Output voltage	220VAC±2%/230VAC±2%/240VAC±2%(Inverter model)
	Output frequency	50Hz±0.5 or 60Hz±0.5(Inverter model)
	Output efficiency	≥99%
Grid	Output voltage range	Following input
	Output frequency range	Following input
Battery mode no-load loss		≤1%(At rated power)
Grid mode no-load loss		≤0.5% Rated power(the charger of grid power doesn't work)
BATTERY		
Battery type	Lead acid battey	Equalizing charging 13.8V Floating charging 13.7V (single battery voltage)
	Customized battery	The parameter can be set according to customers' requirement (Use different types of battery by setting the panel)
Max mains charging current		60A
Max PV charging current		100A
Max charging current(Grid+PV)		100A
Charging method		Three-stage (constant current, constant voltage, float charge)
PROTECTED MODE		
Battery low voltage range		Battery low voltage protection value +0.5V (Single battery voltage)
Battery voltage protection		Factory default: 10.5V (Single battery voltage)
Battery over voltage alarm		Equal charging voltage +0.8V (Single battery voltage)
Battery over voltage protection		Factory default: 17V (Single battery voltage)
Battery over voltage recovery Voltage		Battery over voltage protection value -1V (Single battery voltage)
Overload / short circuit protection		Automatic protection (battery mode), circuit breaker or fuse (Grid mode)
Temperature protection		≥90℃ off output
PERFORMANCE PARAMETERS		
Conversion time		≤4ms
Cooling method		Intelligent cooling fan
Working temperature		-10~40℃
Storage temperature		-15~60℃
Altitude		2000m(>2000m altitude need derating)
Humidity		0~95% (No condensation)
Product Size	420*290*110mm	460*304*110mm
Package Size	486*370*198mm	526*384*198mm
Net weight	8. 5kg	9. 5kg
Gross weight	9. 5kg	10. 5kg

ESS

Rack/Cabinet Lithium Battery Energy Storage System



Li-FePO₄



3-8KW
Out put



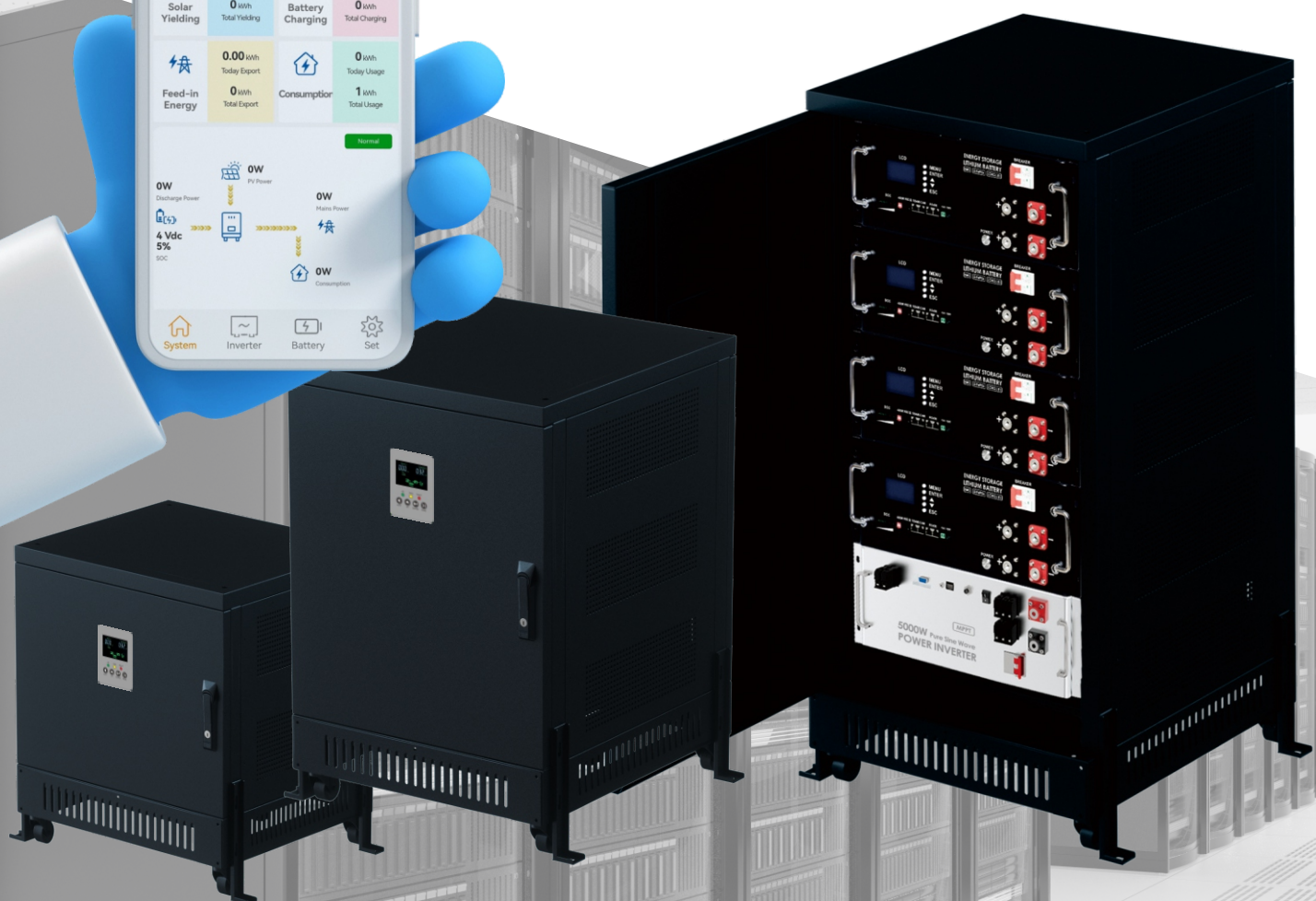
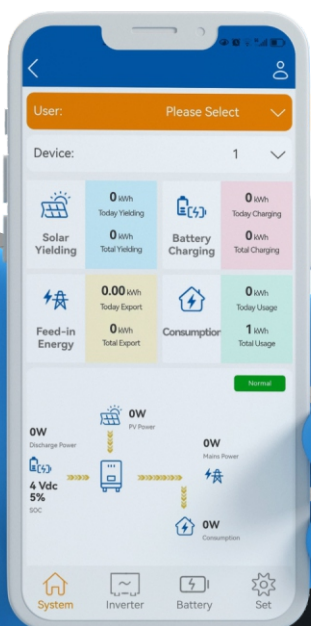
APP
Control



Customized
High/low voltage



Customized
capacity



The ESS system is a high-performance off-grid energy storage system independently developed by Dingke Energy. It uses high-quality lithium iron phosphate cells and is equipped with an intelligent BMS battery management system. It has long cycle life, high safety performance, good sealing, and is equipped with high-frequency off-grid the inverter, built-in MPPT controller, provides efficient and reliable energy solutions for PV off-grid power generation systems, homes PV storage systems, and industrial and commercial energy storage systems.

The system is equipped with a self-developed APP, supports IOS/Android mobile phones, remotely controls the charging and discharging of the ESS system, and real-time system operation data. When the system fails, it can be quickly eliminated and the effective power supply can be restored efficiently.

Model	C-ESS-5	C-ESS-10	C-ESS-15	C-ESS-20
Capacity	5.12KWh/5KW	10.24KWh/5KW	15.36KWh/5KW	20.48KWh/5KW
Standard discharge current	50A	50A	50A	50A
Max. discharge current	100A	100A	100A	100A
Working voltage range	43.2-57.6VDC	43.2-57.6VDC	43.2-57.6VDC	43.2-57.6VDC
Standard Voltage	51.2VDC	51.2VDC	51.2VDC	51.2VDC
Max. charging current	50A	50A	50A	50A
Max. charging voltage	57.6V	57.6V	57.6V	57.6V
Rated PV input voltage	360VDC			
MPPT tracking voltage range	120V-450V			
Max input voltage (VOC) at lowest temperature	500V			
Max input power	6000W			
Number of MPPT tracking paths	1Path			
DC input voltage range	42-60VDC			
Rated mains power input voltage	220VAC/230VAC/240VAC			
Grid power input voltage range	170VAC~280VAC (UPS mode) / 120VAC~280VAC (Inverter mode)			
Grid input frequency range	45Hz~55Hz (50Hz); 55Hz~65Hz (60Hz)			
Inverter output efficiency	94%(MAX)			
Inverter output voltage	220VAC±2%/230VAC±2%/240VAC±2%(Inverter mode)			
Inverter output frequency	50Hz±0.5 or 60Hz±0.5(Inverter mode)			
Inverter output waveform	Pure sine wave			
Grid output efficiency	>99%			
Max mains charging current	60A			
Max PV charging current	100A			
Max charging current (Grid+PV)	100A			
Optional mode	Grid priority/PV priority/Battery priority			
Warranty	5~10Years			
Communication	Optional: RS485/RS232/CAN WiFi/4G/Bluetooth			

*Voltage, capacity, size/color customization, OEM/ODM services can be provided according to customer needs

DK600 Portable Outdoor Charger

■ DK600 portable charger integrates multiple functional working modes. It has built-in high-performance lithium iron phosphate core, high-quality BMS management system, and efficient inverter conversion circuit. It can be used as home, office, outdoor camping and emergency backup power supply. Optional mains or solar charging, can provide rated 220V/600W AC output, 5V/12V DC output, USB output, Type C, wireless output.

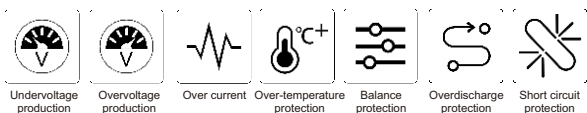
- Compact, portable and easy to use
- Pure sine wave output, no damage to load
- 0.3s fast start, high efficiency
- Support QC3.0 fast charging, support PD18-100W fast charging, 15W wireless charging
- Support QC3.0 fast charging, support PD18-100W fast charging, 15W wireless charging

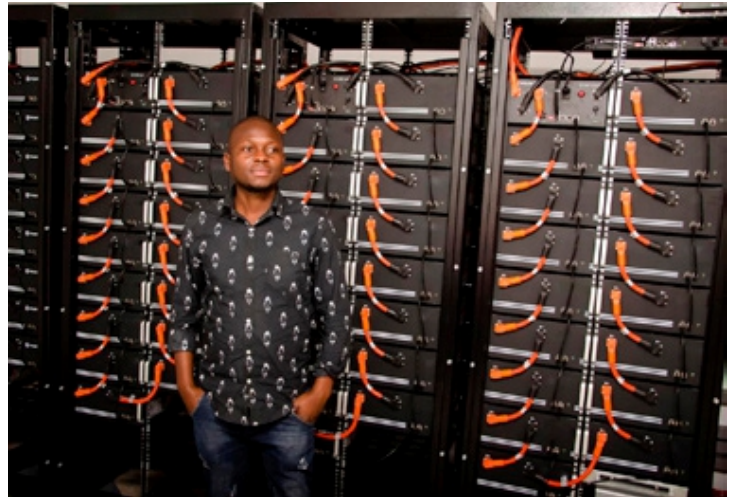
*Socket type standards can be customized according to customer requirements.

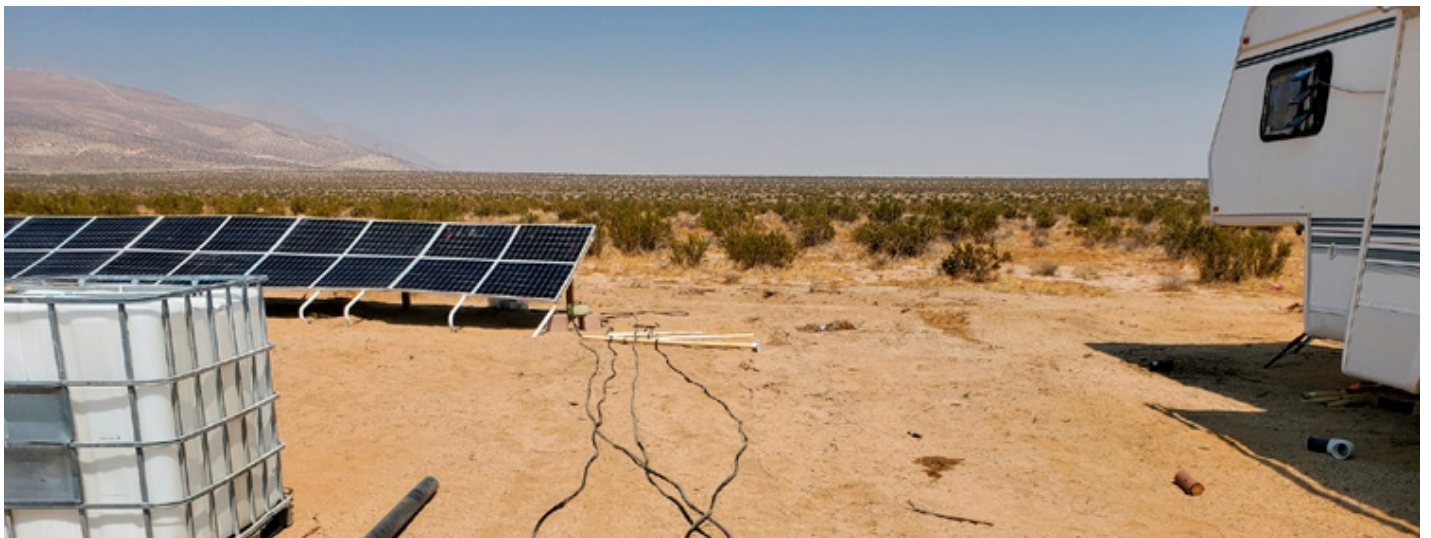


Product specification

Product name	Dk600				
Rated capacity	576WH				
Rated power	600W				
Operating temperature(charging)	0°C~40°C				
Support charging type	Support direct mains charging, solar charging				
Input voltage range	Mains input 100V/ solar input 20V				
Maximum input voltage	Mains input 100V/solar input 20V				
Charging voltage	12V				
AC Maximum charging current	50V/5A				
Maximum charging power	100W				
Operating temperature(discharge)	-10°C~40°C				
Output type	AC	USB	Type-C	DC	无线充电
Output rated power	600W	QC3.018W	100W MAX	100W	15W
Output rated frequency	50Hz/60Hz±1Hz(Automatic recognize)				
Output voltage/current	110~230V/10A	5V/2.4A,5V/3A	5~20V/3.25A	12.5V/8A	12V/1.25A
Heat dissipation method	Two-way air cooling technology				
Running noise	≤5db				
Protection level	IP 53				
Working environment humidity	65±20%RH				
Storage environment humidity	65±20%RH				
Product size	265*200*195mm				
Package size	365*325*298mm				
Net weight	4.9kg				
Gross weight	6.5kg				
Packing method	Carton packing				













Collaborating with



South Africa



Russia



Kenya



Ethiopia




Jordan




Saudi Arabia



Volt-Hi Technology Solutions

 22 Karee Street, Southdowns Office Park, Block B,
Suite 5E, Centurion, Irene,, 0062, South Africa

 +27 76 986 2118
+27 84 642 2624
+27 72 034 8061

 info@volt-hi.co.za

 www.volt-hi.co.za

